

# DUAL TSPO

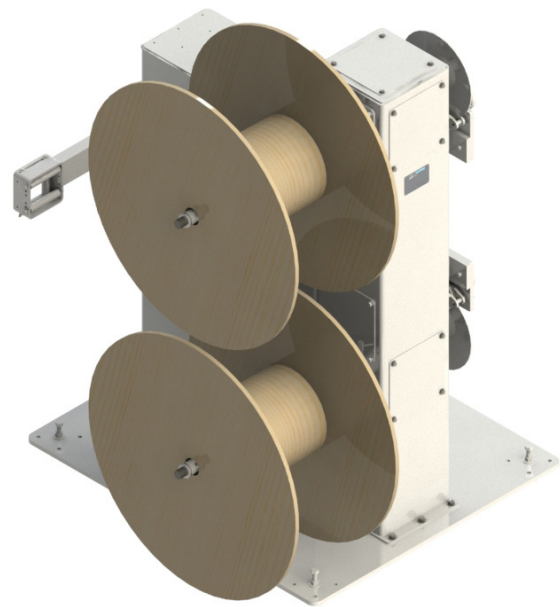


## Dual Shafted Tower Style Pay Off

Model TSPO is a light weight, economical pay out machine that is ideal for 30-inch spools up to 15 inches wide and weighing 150 lb. or less. It comes complete with your choice of electromagnetic, disk or manual leather strap tension control and adjustable product guide box. The small footprint means this unit won't take up much shop space – order with casters for portability, use leveling feet or bolt it to the floor. Combine this unit with the Tower Style Take Up unit for the ultimate, flexible and foolproof system to meet your reeling needs.

### Features & Benefits

- Near zero maintenance
- Simple & easy to use
- Minimum spool height for easy loading
- Manual tension control adjustment
- Plug in style shaft adapters
- 34-40 in. line height
- Adjustable guide rollers and guide box position
- Portable with casters option
- Can be bolted to the floor permanently
- Heavy gauge powder coated steel construction



DUAL TSPO - R-L FEED

### Specs

- 2 in. product OD/width
- 150 lb. capacity per shaft
- Accepts Ø 30" x 15"W spools

### Utility Requirements

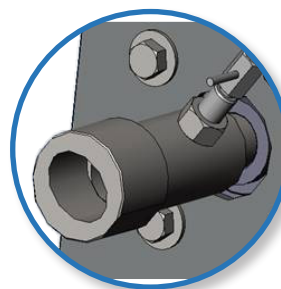
- 120/230/480 VAC, 1PH power required for electromagnetic brake control option

### Approximate Weight and Dimensions

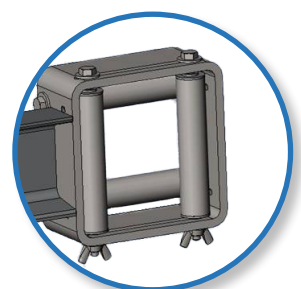
- 42"W x 36"D x 55.5" - 61"H
- Actual Footprint: 42"W x 36"D
- 690 lb.

### Options

- Feed orientation: ☐ L-R ☐ R-L
- Support: ☐ Casters ☐ Leveling feet ☐ None (bolt down)
- Tension control: ☐ Electromagnetic ☐ Mechanical disk ☐ Leather strap
- Additional plug-in shaft sizes available



QUICK RELEASE PLUG-IN  
SHAFT ADAPTER



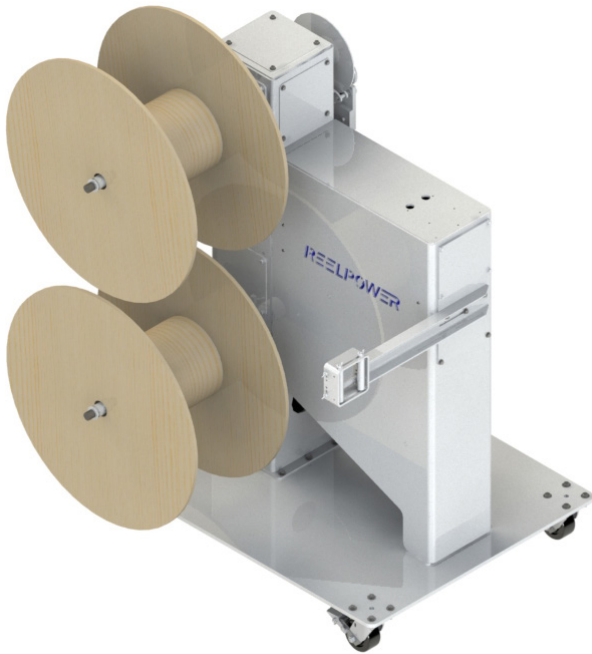
ADJUSTABLE ROLLER GUIDE  
BOX

# DUAL TSPO

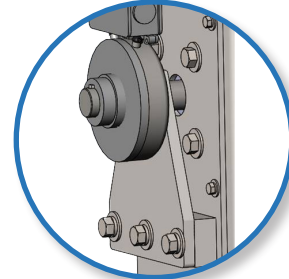


*Dual Shafted Tower Style Pay Off*

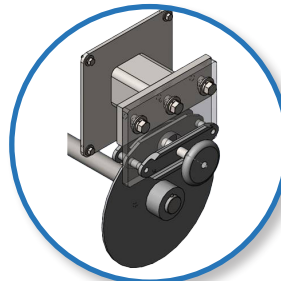
## Tower Style Pay Out



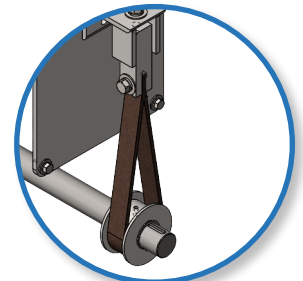
DUAL TSPO - L-R FEED



ELECTRO MAGNETIC TENSION  
BRAKE

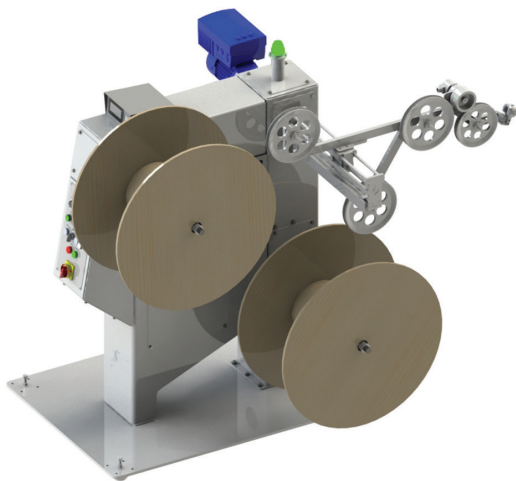


10" MECHANICAL DISK  
TENSION BRAKE



LEATHER STRAP DRAG  
TENSION BRAKE

## Part of the Tower Style Family of Lightweight Reeling Products



**REELPOWER**  
INDUSTRIAL

5101 S. Council Road, Suite 100 • Okla. City, OK. 73179

405.672.0000 • 405.672.7200 Fax

[www.reelpowerind.com](http://www.reelpowerind.com)